



PLA-RP100BA3

Power Inverter Heat Pump

R410A High COP 4-Way Blow Ceiling Cassette System

Advanced inverter technology makes the Mr Slim Power Inverter the number one choice for improving comfort. They provide energy savings of up to 70% annually when compared to a previous non-inverter model. Operating noise has also been reduced thanks to improvements in fan design, while existing pipe work is reusable for easier maintenance and installation.

- **Optional 'I See Sensor' for energy saving and smooth temperature control throughout the room**
- **Airflow controllable for ceiling heights up to 4.2m, with automatic adjustment of fan speed**
- **Reduced draft air distribution, with independent vane control**
- **Filter lowering operation down to 4m (optional PLP-6BAJ grille required)**



Pictures not to scale

Product Details

PLA-RP100BA3 Indoor Unit

Capacity (kW):	
Heating (Nominal) (Low - High)	11.20 (4.50 - 14.00)
Cooling (Nominal) (Low - High)	10.00 (4.90 - 11.40)
Heating (UK) (Low - High)	9.50 (3.85 - 11.90)
Cooling (UK) (Low - High)	9.20 (4.50 - 10.50)
SHF R410A (Nominal)	0.74
COP / EER (Nominal)	4.61 / 4.18
Energy Label Heating / Cooling	A / A
Width (grille) - mm	840 (950)
Depth (grille) - mm	840 (950)
Height (grille) - mm	298 (35)
Weight (grille) - kg	26 (6)
Airflow (m3/min) - Lo-Mi1-Mi2-Hi	20-23-26-30
Noise (dBA) - Lo-Mi1-Mi2-Hi	32-34-37-40
Pipe Size Gas mm (in)	15.88 (5/8)
Pipe Size Liquid mm (in)	9.52 (3/8)
Electrical Supply	Fed by Outdoor Unit
Phase	Single
Fuse Rating (BS88) - HRC (A)	6
Interconnecting Cable No. Cores	4
Grille Ref	PLP-6BA GRILLE

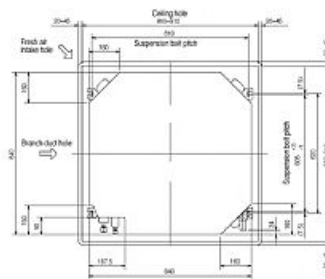
PUHZ-RP100YKA Outdoor Unit

Width - mm	1050
Depth - mm	330+30
Height - mm	1338
Weight - kg	124
Noise (dBA) (Heating /Cooling) - Lo-Hi	51 /46-49
Electrical Supply	380-415v, 50Hz
Phase	3
Fuse Rating (BS88) - HRC (A)	10
SystemPower Input (kW) - Heating (Nominal)	2.43
SystemPower Input (kW) - Cooling (Nominal)	2.39
SystemPower Input (kW) - Heating (UK)	2.16
SystemPower Input (kW) - Cooling (UK)	2.03
Starting Current (A)	5
SystemRunning Current (A) - Heating / Cooling	4.59 / 4.51
Mains Cable No. Cores	5
Max Pipe Length (m)	75
Max Height Difference (m)	30
Charge (kg) - 30m	5

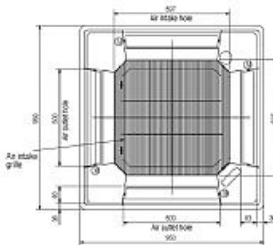
Dimensions

PLA-RP100BA3

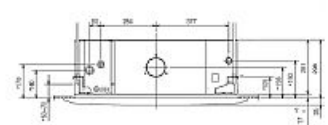
Upper View >



Front View >

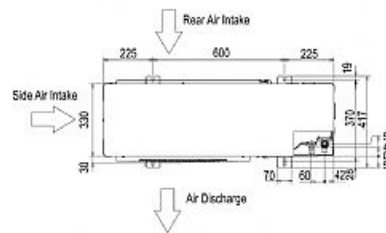


Side View >

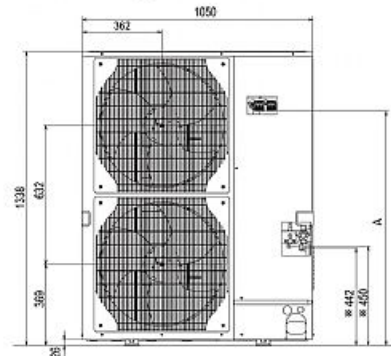


PUHZ-RP100YKA

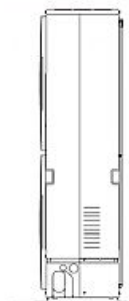
Upper View >



Front View >



Right Side View >



Telephone: 01707 282880

Email: air.conditioning@meuk.mee.com Website: <http://www.mitsubishielectric.co.uk/aircon>

Tel:
Fax:



Mitsubishi Electric reserves the right to make any variation in technical specification to the equipment described, or to withdraw or replace products without prior notification or public announcement.